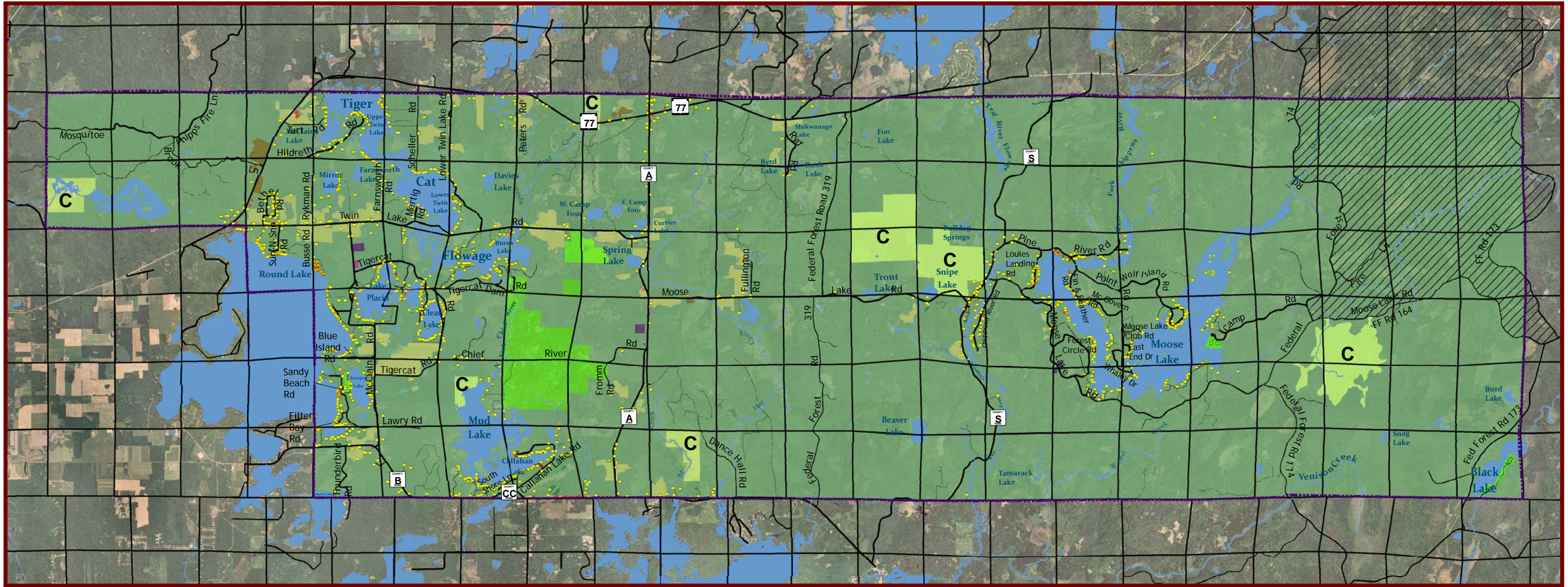


Map 8.1 - Existing Land Use

Town of Round Lake, Sawyer County, Wisconsin



Residential Structures

- Condominium Lands with a complex of housing units in which each unit, from the unit walls inward, are individually owned and where all condo owners own the property as a group (association).
- Single Family Lands with single-family structures designed for human habitation including permanent, seasonal, mobile housing units (not designated mobile home parks) and recreational cabins and cottages.

Existing Land Use

- Transportation Public and private railroads, airports, and roads.
- Recreational Resort Lands with structures designed for human habitation where the primary use is rental of recreational cabins and cottages.
- Agriculture Land primarily for growing of croplands, livestock grazing, dairy farming, pastures, cranberry bogs, farmsteads and farming support activities.

Commercial

Industrial

Communications & Utilities

Extraction

Outdoor Recreation

Office buildings, retail sales establishments, restaurants, rental storage facilities, hotels/motels, inns, and bed & breakfast.

Manufacturing and processing facilities, warehousing and distribution facilities, including controlled outdoor storage areas related to industrial facilities.

Cellular, TV and radio towers and related facilities, wastewater treatment facilities, power substations, electric transmission lines, power generation facilities, and pipelines.

Quarries, gravel pits and other non-metallic mining operations.

Public and private lands designed or designated as town, village, city, county, and state parks and recreation areas; hunting preserves or other designed hunting management areas; golf courses, shooting ranges, and campgrounds.

Institutional

Open Space

Conservancy

Water

Forest

Government administrative buildings and offices; fire halls/stations; government recycling facilities; hospitals, clinics, and special care-facilities; public schools and colleges; fraternal organizations; cemeteries; churches and other religious facilities.

Private and public owned non-forested lands and fallow fields.

Public, private, and non-profit lands dedicated to the conservation of wildlife, wildlife habitat, fisheries, natural resources, and scenic/natural beauty.

Lakes, rivers, perennial streams and ponds.

Private and public owned forested lands, including land under forest crop law and applicable National Forest lands having special use designations within the Chequamegon National Forest.

Political Boundaries

- Community Boundary
- Section Boundary

Other Boundaries

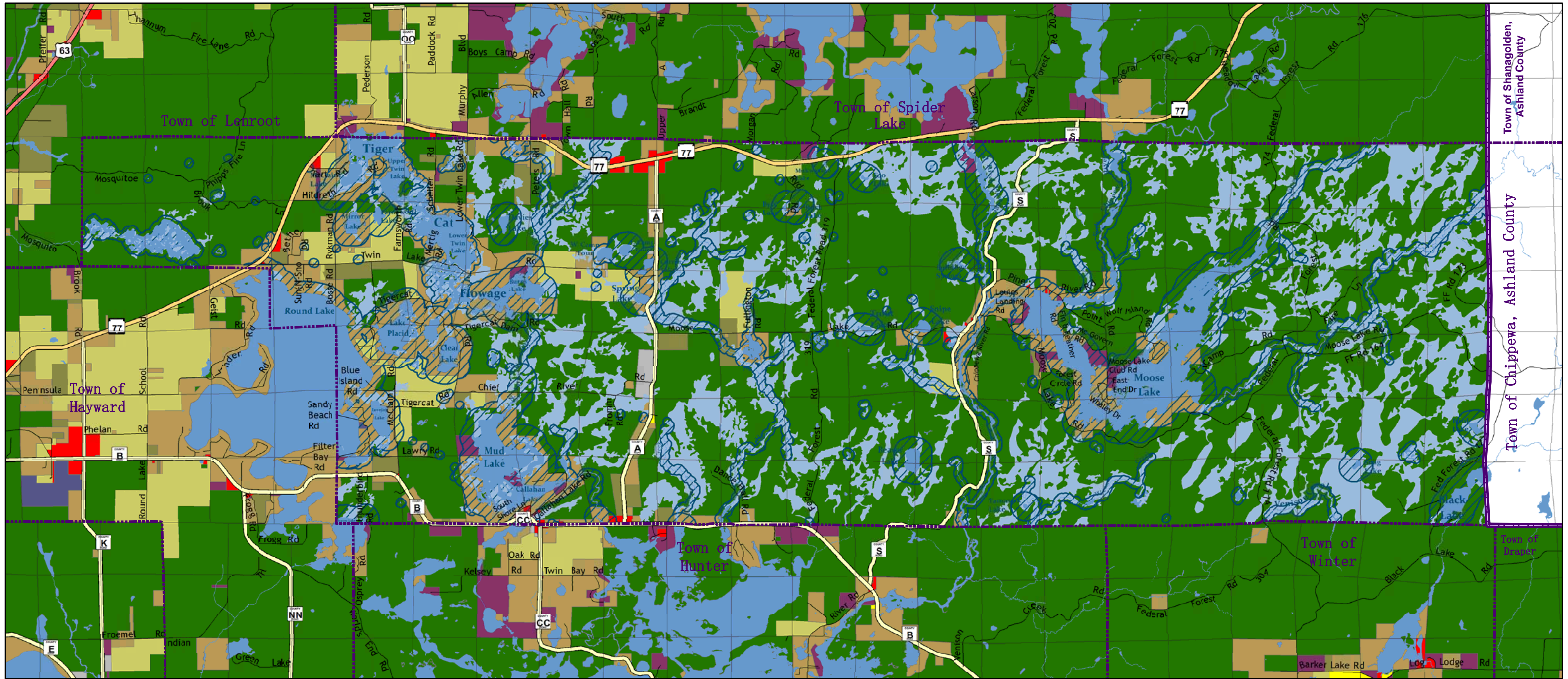
- Nonmotorized Area

Data Sources: Town of Round Lake, Northwest Regional Planning Commission



Map 8.2 - Zoning

Town of Round Lake, Sawyer County, Wisconsin



Government Boundary

- Minor Civil Division
- County Boundary
- Section

Hydrography

Lake/River

River/Stream

- Perennial
- Intermittent

Road

- US Highway
- State Highway
- County Highway
- Local Road

Zoning

Agricultural One	Forestry One	Residential One	Shoreland Protection One (NR115 overlay)
Agricultural Two	Industrial One	Residential/Recreational One	Wetland/shoreland One
Commercial One	Planned Unit Development	Residential/Recreational Two	Water

0 0.5 1 2 3 4 5 Miles

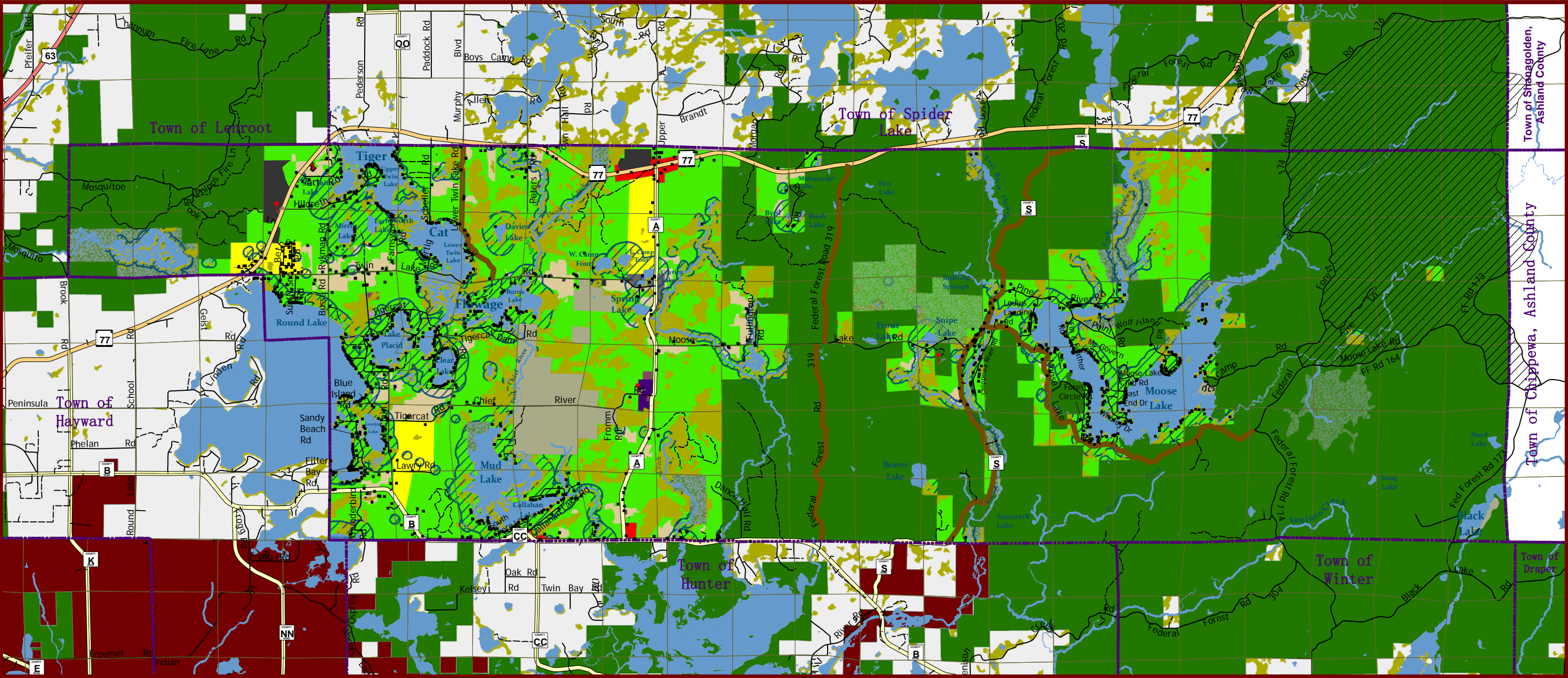
1 inch equals 1.5 miles

Data Source: Sawyer County (05/2008), Wisconsin Department of Natural Resources

Northwest Regional Planning Commission
an economic development district
10/26/2009

Map 8.3 - Future Land Use

Town of Round Lake, Sawyer County, Wisconsin



- | | | | | | |
|----------------|------------------|--------------------------|--------------------------|------------------------|----------------------------------|
| Roads | Hydrology | Future Land Use | Future Land Use | Future Land Use | Future Land Use |
| US Highway | Lakes | Agriculture | Extraction | Outdoor Recreation | Residential Expansion Areas |
| State Highway | River/Stream | Commercial | Government/Institutional | Parks & Recreation | Shoreland Regulated Zone (NR115) |
| County Highway | | Communications/Utilities | Light Industrial | Private Forest | Water |
| Local/Forest | | Conservancy | Non-Motorized Area | Public Forest | Wetland |
| | | | | | Existing Residential Structure |
| | | | | | Future Cell Tower |
| | | | | | Future Rustic Road |



Data Sources: Town of Round Lake, Northwest Regional Planning Commission, Wisconsin Department of Natural Resources (Wetlands), Sawyer County (NR115 buffer)

0 0.5 1 2 3 4 5 Miles

1 inch equals 1.5 miles