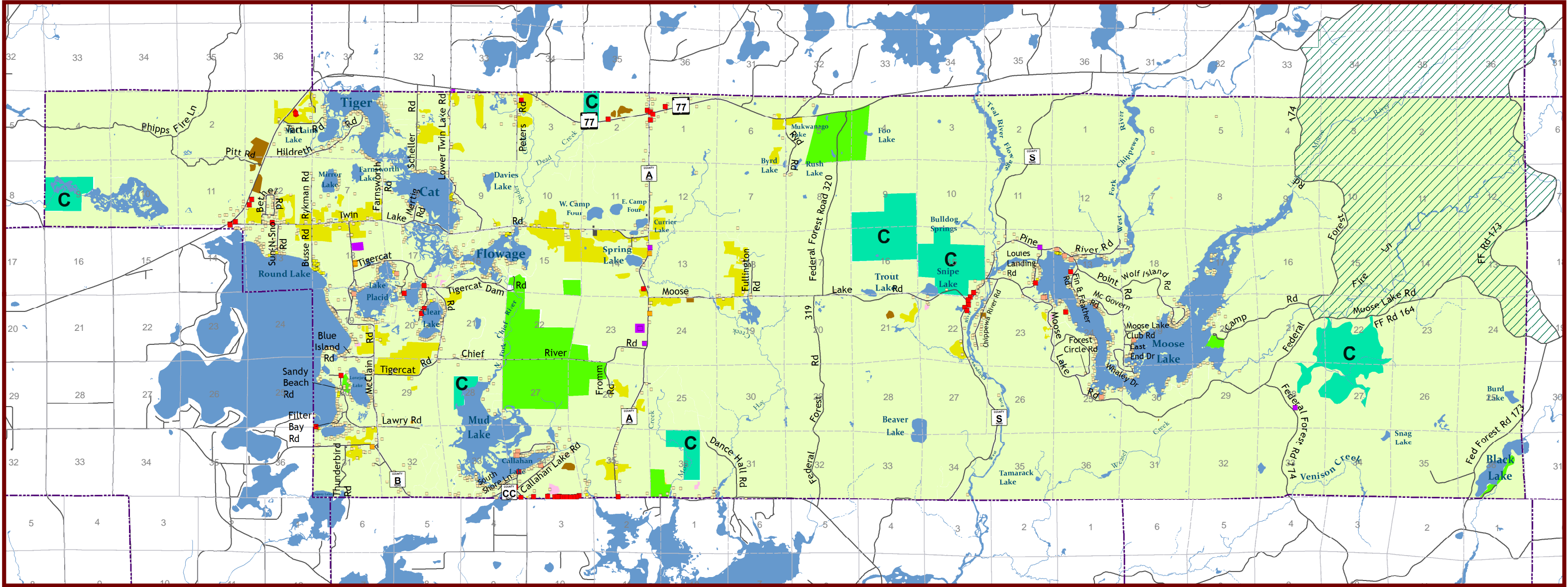


Map 8.1 - Existing Land Use

Town of Round Lake, Sawyer County, Wisconsin



Residential Structures

- Condominium: Lands with a complex of housing units in which each unit, from the unit walls inward, are individually owned and where all condo owners own the property as a group (association).
- Single Family: Lands with single-family structures designed for human habitation including permanent, seasonal, mobile housing units (not designated mobile home parks) and recreational cabins and cottages.

Existing Land Use

- Transportation: Public and private railroads, airports, and roads.
- Recreational Resort: Lands with structures designed for human habitation where the primary use is rental of recreational cabins and cottages.
- Agriculture: Land primarily for growing of croplands, livestock grazing, dairy farming, pastures, cranberry bogs, farmsteads and farming support activities.

Commercial

Office buildings, retail sales establishments, restaurants, rental storage facilities, hotels/motels, inns, and bed & breakfast.

Industrial

Manufacturing and processing facilities, warehousing and distribution facilities, including controlled outdoor storage areas related to industrial facilities.

Communications & Utilities

Cellular, TV and radio towers and related facilities, wastewater treatment facilities, power substations, electric transmission lines, power generation facilities, and pipelines.

Extraction

Quarries, gravel pits and other non-metallic mining operations.

Outdoor Recreation

Public and private lands designed or designated as town, village, city, county, and state parks and recreation areas; hunting preserves or other designed hunting management areas; golf courses, shooting ranges, and campgrounds.

Institutional

Government administrative buildings and offices; fire halls/stations; government recycling facilities; hospitals, clinics, and special care-facilities; public schools and colleges; fraternal organizations; cemeteries; churches and other religious facilities.

Open Space

Private and public owned non-forested lands and fallow fields.

Conservancy

Public, private, and non-profit lands dedicated to the conservation of wildlife, wildlife habitat, fisheries, natural resources, and scenic/natural beauty.

Water

Lakes, rivers, perennial streams and ponds.

Forest

Private and public owned forested lands, including land under forest crop law and applicable National Forest lands having special use designations within the Chequamegon National Forest.

Political Boundaries

- Community Boundary
- Section Boundary

Other Boundaries

- Nonmotorized Area